

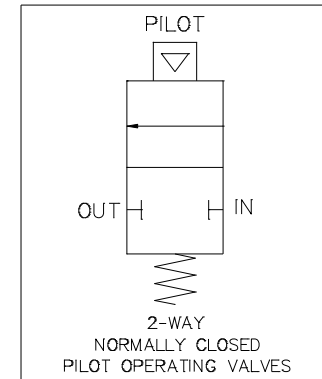
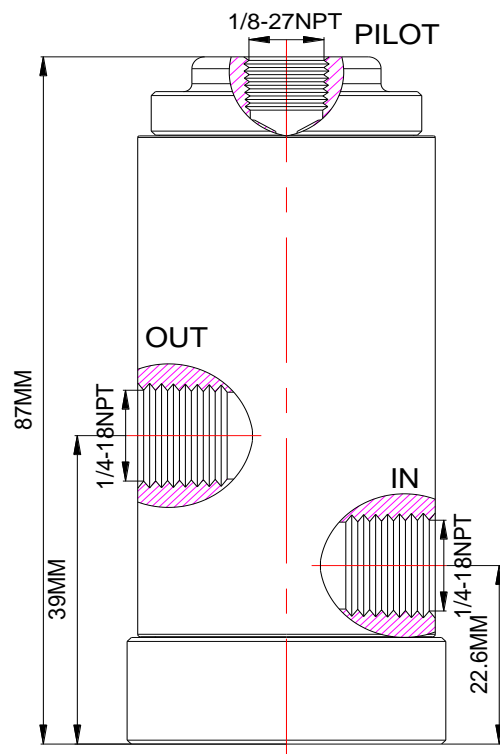


www.macis.com.sg

PILOT VALVE

Valve Operation

MV29171-54L-D-C-2W is a 2-Way Normally Close Auto Operation Pilot Valve. Pressure signal applied to Pilot Port to operate the valve. The pressure signal to Pilot port within the required minimum pilot pressure range, the valve will actuate to open the supply pressure from IN port to OUT port as per Status table (State 1).



Flow Control Status table

STATE	IN	OUT	PILOT
1	O	O	O
2	-	-	-

Ordering Ref : MV29171-54L-D-C-2W

Specification

Control Application	2-Way Normally Closed Auto Operation Type
Port Connection Size	IN & OUT Ports: 1/4"-18 NPT F Pilot Port: 1/8"-27 NPT F
Exterior Shape	Circular Ø 38.1 mm (1 1/2 ")
Working Media	Air
Net Weight	600 gm
Pilot Pressure Range	25 - 120 PSI (1.8 - 8.2 bar)
Max Working Pressure	200 PSI (13.7 bar)
Temperature Range	- 30°C to 120°C <i>Other Temperature Ranges available. Consult Factory</i>
Material(Valve Body)	316 L
Seal Material(Standard)	Viton(FKM) <i>Other Seal Material are Available Upon Request</i>
Flow Rate	Cv = 1.6

** Measurement stated are with tolerance of +/-10%. Optional Parts/Material are available upon request.

MACIS PTE LTD

Blk 3015A Ubi Road 1, #01-02 & #01-06 Kampong Ubi Industrial Estate, Singapore 408705
Email : sales@macis.com.sg TEL : 65-6749 6011 / 65-6749 7882 FAX : 65-6749 1398