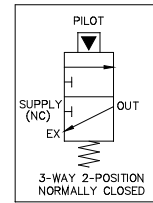
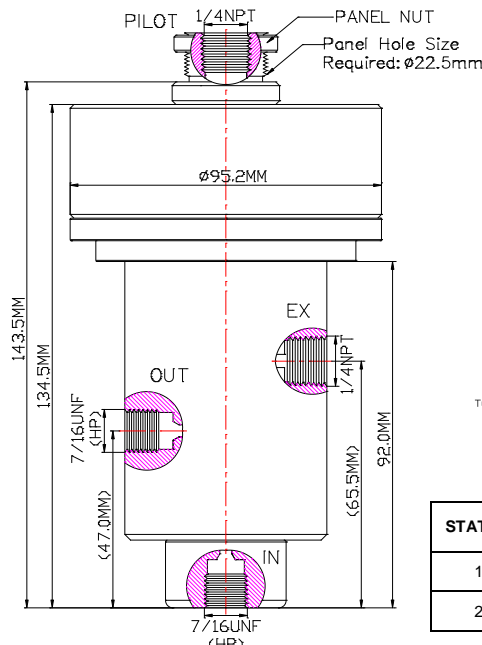




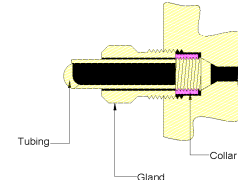
# INTERFACE VALVE

Valve Code: MV 29A20K3W-7/16NC-1/4E-1/4P-N-H

www.macis.com.sg



Medium pressure tubing ,  
tubing size is 1/4" ODX0.109"ID,  
1/4" Medium Pressure(LF4)



Flow Control Status Table

STATE	IN	OUT	EX	Pilot
1	O	O	-	O
2	-	O	O	-

Ordering Ref : MV 29A20K3W-7/16NC-1/4E-1/4P-N-H

## Specification

Control Application	3-Way 2-Position Normally Closed Auto Operation Type	<p><b>Valve Operation</b></p> <p>MV 29A20K3W-7/16NC-1/4E-1/4P-N-H is a 3-way 2-position Normally Closed Auto Operation Interface Valve. Working pressure need to be applied at the Pilot port for it to operate.</p> <p>To open the valve, the pressure signal to Pilot port within the required minimum pilot pressure range, the valve will actuate to open supply pressure from IN port to OUT port and block at EX port, as per above Status table State 1.</p> <p>To close the valve, the Pilot port pressure lower than Min pilot operating pressure, the valve will be auto reset to close as per above status table State 2. Supply pressure at IN port will be block and accumulated operating pressure will released through the EX port.</p>
Port Connection Size	<b>IN &amp; OUT</b> Ports: 7/16" UNF F <b>EX</b> Port: 1/4" NPT F <b>Pilot</b> Port: 1/4" NPT F	
Pilot Linker Shape	Circular Ø95.2mm (3 ¾" )	
Net Weight	3.5 KG	
Working Media	Oil	
Pilot Pressure Range	30-150 PSI (2.0 – 10.3 bar)	
Max Working Pressure	<b>20,000 PSI (1,379.02 bar)</b>	
Temperature Range	- 30°C to 120°C <i>Other Temperature Ranges available. Consult Factory</i>	
Material(Valve Body)	316L	
Seal Material	Nitrile Rubber(NBR) <i>Other Seal Material Are Available upon request.</i>	
Mounting Hole Size	Ø22.5 mm ( 57/64" )	
Flow Rate	Cv = 0.18	

\*\* Measurement stated are with tolerance of +/-10%. Optional Parts/Material are available upon request.

MACIS PTE LTD

Blk 3015A Ubi Road 1, #01-02 & #01-06 Kampong Ubi Industrial Estate, Singapore 408705

Email : sales@macis.com.sg