

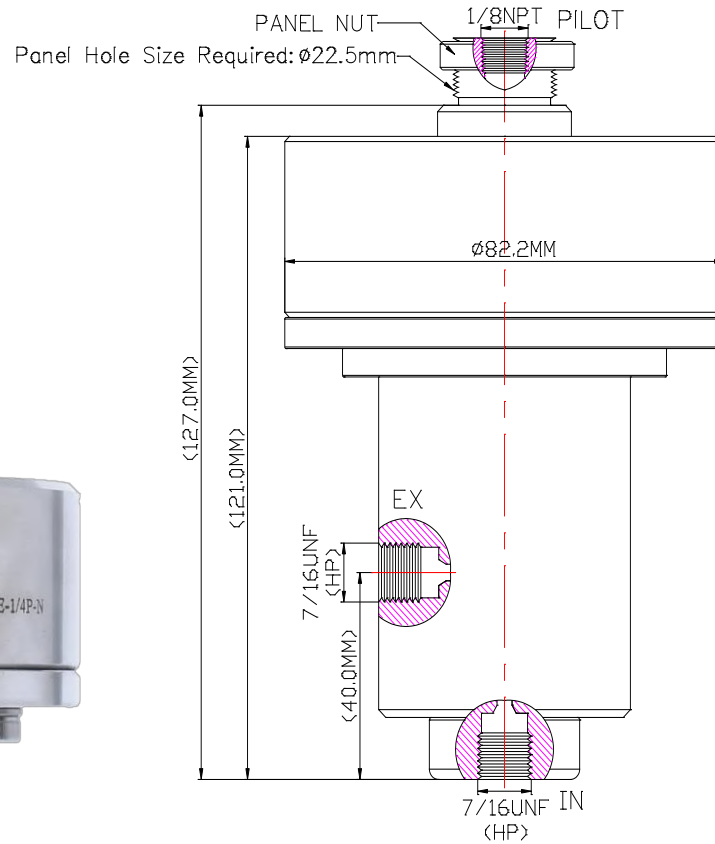


www.macis.com.sg

INTERFACE VALVE

Valve Operation

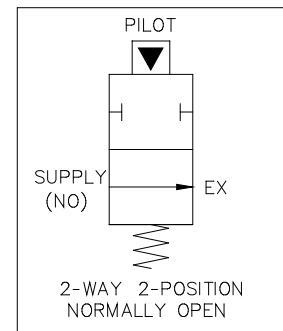
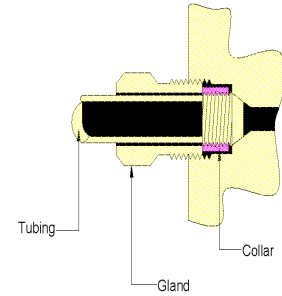
MV 29A25K2W-7/16NO-7/16E-1/8P-N-H is a 2-Way Normally Open, Pilot Supply pressure Operated Interface Valve. The valve designed to open incoming supply pressure from IN to EX port (as per below Status Table State 2) when there is pilot pressure present. With pilot pressure applied, IN pressure is block to EX port (as per below Status Table State 1). A loss of Pilot Supply pressure will open and vent supply pressure from IN port to EX port.



Flow Control Status Table

STATE	IN	EX	PILOT
1	o	-	o
2	o	o	-

Medium pressure tubing ,
tubing size is 1/4" ODX0.109"ID,
1/4"Medium Pressure(LF4)



Ordering Ref : MV 29A25K2W-7/16NO-7/16E-1/8P-N-H

Specification

Port Connection Size	IN & EX Ports:7/16" UNF F Pilot Port: 1/8" NPT F
Pilot Linker Shape	Circular Ø82.2mm (3 15/64 ")
Net Weight	3.4 KG
Working Media	Oil
Pilot Pressure Range	40 -150 PSI (2.8 -10.3bar)
Max Working Pressure	25,000 PSI (1,723.6 bar)
Temperature Range	- 30°C to 120°C <i>Other Temperature Ranges available. Consult Factory</i>
Material(Valve Body)	316L
Seal Material	Nitrile Rubber(NBR) <i>Other Seal Material are Available Upon Request</i>
Mounting Hole Size	Ø22.5 mm (57/64 ")
Flow Rate	Cv = 0.36

** Measurement stated are with tolerance of +/-10%. Optional Parts/Material are available upon request.

MACIS PTE LTD

Blk 3015A Ubi Road 1, #01-02 & #01-06 Kampong Ubi Industrial Estate, Singapore 408705
Email : sales@macis.com.sg TEL : 65-6749 6011 / 65-6749 7882 FAX : 65-6749 1398