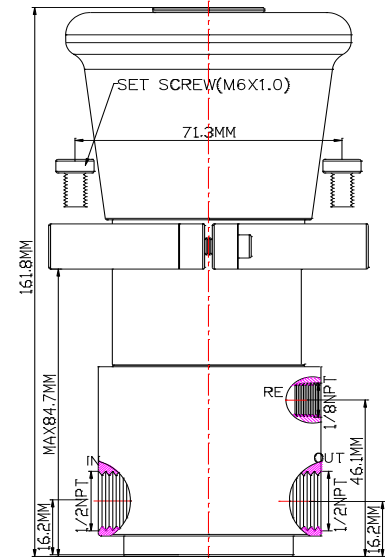
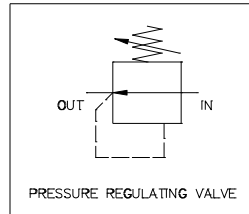




www.macis.com.sg

PRESSURE REGULATING VALVE

Valve Code: MV 794LP6K-1K-1/2R-S



Ordering Ref : MV 794LP6K-1K-1/2R-S

*MV794LP6K-1K-1/2R-S is a 2-Position, Normally Open **without Self-Relieving** Pressure regulator. A pressure regulator is a **valve** that used to reduce a high upstream pressure to a precisely decrease output pressure, and the pressure regulator will be provide stable output pressure for connect to outlet control circuit or control device operating.*

*The pressure media enters the regulator through by IN port, turning the adjusting wheel **clockwise** will increase the spring exerted tension to **increase** the regulator **output pressure**, rotating the adjusting wheel **counterclockwise** will **decrease** the regulator **output pressure**, and this reduced output pressure will be maintained within a predetermined operating pressure range or limit.*

Specification

Port Connection Size	Input: 1/2" - 18NPT F Output: 1/2" - 18NPT F Return: 1/8-27NPT F
Net Weight	2.1 kg
Working Media	Air
Working Pressure	Max Inlet Pressure: Service up to 10,000psi (689.4bar) , Optimum 6,000psi (413.7bar) Output Pressure Range: 0-1,000psi (0-68.9bar)
Temperature Range	- 30°C to 120°C <i>Other Temperature Ranges available. Consult Factory</i>
Material(Valve Body)	316L
Adjusting Wheel Material	Polyamide <i>Other Material are available, Consult Factory</i>
Mounting Hole Size	Ø71.5mm (2 ¹³ / ₁₆ ")
Orifice Size(Standard)	Ø2.8mm(⁷ / ₆₄ ")
Flow Rate	Cv = 0.2
Seal Material	Viton(FKM) <i>Other Material are available, Consult Factory</i>

** Measurement stated are with tolerance of +/-10%. Optional Parts/Material are available upon request.

MACIS PTE LTD

Blk 3015A Ubi Road 1, #01-02 & #01-06 Kampong Ubi Industrial Estate, Singapore 408705

Email : sales@macis.com.sg