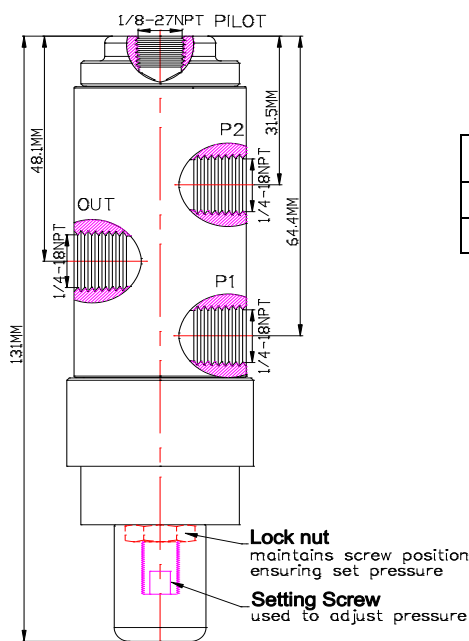




www.macis.com.sg

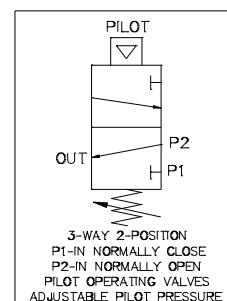
ADJUSTABLE PILOT VALVE

Valve Code: MV29171-54L-D-SP-3W-PS



Flow Control Status Table

STATE	P1	P2	OUT	PILOT
1	-	O	O	O
2	O	-	O	-



Ordering Ref : MV29171-54L-D-SP-3W-PS

Specification

Control Application	3-Way 2-Position, Universal Operation Adjustable Pilot Setting Type (Pilot Operated Spring Return)	Valve Operation <i>MV29171-54L-D-SP-3W-PS is a 3-Way 2-Position Universal Operation Adjustable Pilot Setting Auto Pilot Valve. Pressure signal applied to Pilot port to operate the valve.</i> <i>The pressure signal to Pilot port within the required minimum pilot pressure range, the valve will actuate to open the supply pressure from P2 port to OUT port and block at the P1 port, as per above flow control table (state1).</i> <i>When Pilot port pressure signal lower than the minimum pilot pressure range required, the valve will spring return to open the supply pressure from P1 port to OUT port and block at the P2 port, as per above Status table (State 2).</i> <i>* Note: 1. Setting screw is the additional function for adjusting the required pilot operation pressure, the valve pilot setting range can be adjustable from 30-50psi (2.1 – 3.4 bar).</i> <i>2. The valve is a universal operation, when select P1 port as IN port, the valve is normally closed. When select P2 port as IN port the valve is normally open.</i>
Port Connection Size	P1, P2 & OUT Ports: 1/4"-18 NPT F Pilot Port: 1/8"-27 NPT F	
Exterior Shape	Circular Ø 38.1 mm (1 1/2 ")	
Net Weight	800 gm	
Working Media	Air	
Pilot Pressure(Setting) Range	30-50 PSI (2.1- 3.4 bar)	
Max Working Pressure	200 PSI (13.7 bar)	
Temperature Range	- 30°C to 120°C <i>Other Temperature Ranges available. Consult Factory</i>	
Seal Material(Standard)	Viton(FKM) <i>Other Seal Material Are Available Upon Request</i>	
Material(Valve Body)	316 L	
Flow Rate	Cv = 1.6	

** Measurement stated are with tolerance of +/-10%. Optional Parts/Material are available upon request.

MACIS PTE LTD

Blk 3015A Ubi Road 1, #01-02 & #01-06 Kampong Ubi Industrial Estate, Singapore 408705

Email : sales@macis.com.sg