



www.macis.com.sg

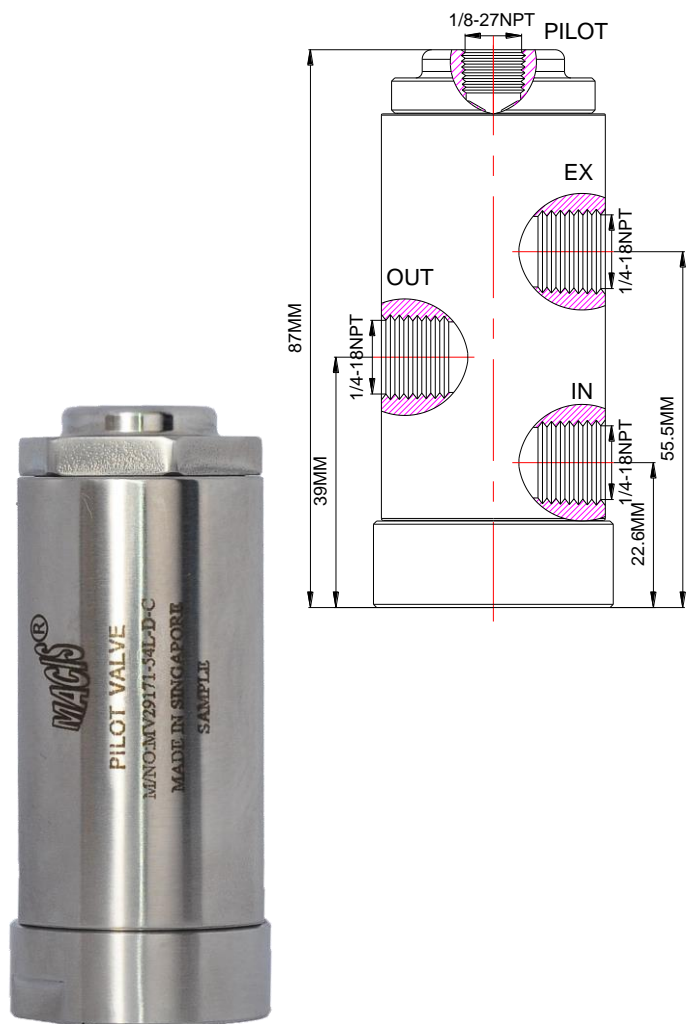
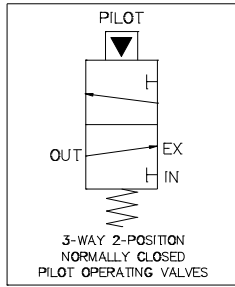
PILOT VALVE

Valve Operation

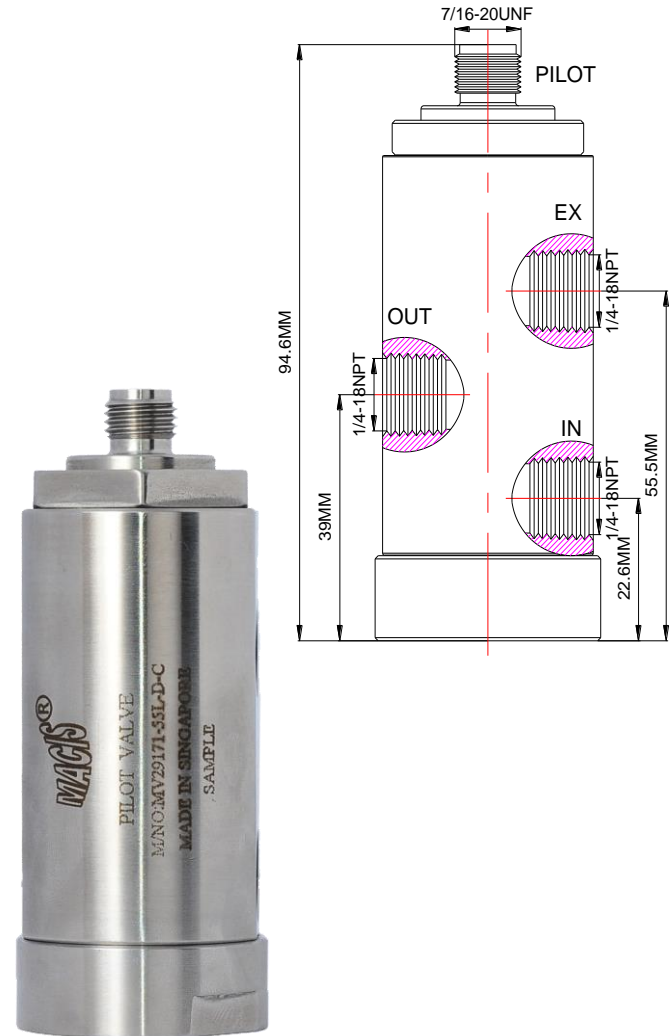
MV29171-54H-D-C & MV29171-55H-D-C are 3-way 2-position Normally Closed Auto Reset Pilot valves. Pressure signal applied to Pilot Port to operate the valve.
The pressure signal to Pilot port within the required minimum pilot pressure range, the valve will actuate to open the supply pressure from IN port to OUT port and block the EX port, as per Status table (State 2).
When pilot port pressure signal lower than the minimum pilot pressure range required, the valve will spring return to close as per Status table (State 1). Supply pressure at IN port will be block, and the valve will vent the system pressure from OUT port to EX port.

Flow Control Status Table

STATE	IN	OUT	EX	PILOT
1	-	O	O	-
2	O	O	-	O



Ordering Ref : MV29171-54H-D-C



Ordering Ref : MV29171-55H-D-C (Without Ferrule & Nuts)

MV29171-55H-D-C-P1/4OD (With Ferrule & Nuts)

Specification

Control Application	3-Way 2-Position Normally Closed Auto Reset Type (Pilot Operated Spring Return)
Exterior Shape	Circular Ø 38.1 mm (1 1/2 ")
Net Weight	600 gm
Working Media	Oil
Pilot Pressure Range	30 - 120 PSI (2.1 - 8.2 bar)
Max Working Pressure	200 PSI (13.7 bar)
Temperature Range	- 30°C to 120°C <i>Other Temperature Ranges available. Consult Factory</i>
Material(Valve Body)	316 L
Seal Material(Standard)	Nitrile Rubber(NBR) <i>Other Seal Material are Available Upon Request</i>
Flow Rate	Cv = 1.6

Distinctions

Ordering Ref No : MV29171-54H-D-C



Port Connection Size : IN , OUT & EX Ports : 1/4"-18NPT F, Pilot Port : 1/8"-27NPT F

Ordering Ref No : MV29171-55H-D-C



Port Connection Size : IN , OUT & EX Ports : 1/4"-18NPT F, Pilot Port : 7/16"-20UNF M

** Measurement stated are with tolerance of +/-10%. Optional Parts/Material are available upon request.

MACIS PTE LTD

Blk 3015A Ubi Road 1, #01-02 & #01-06 Kampong Ubi Industrial Estate, Singapore 408705
 Email : sales@macis.com.sg TEL : 65-6749 6011 / 65-6749 7882 FAX : 65-6749 1398