



www.macis.com.sg

# PILOT VALVE (Manual Reset Type)

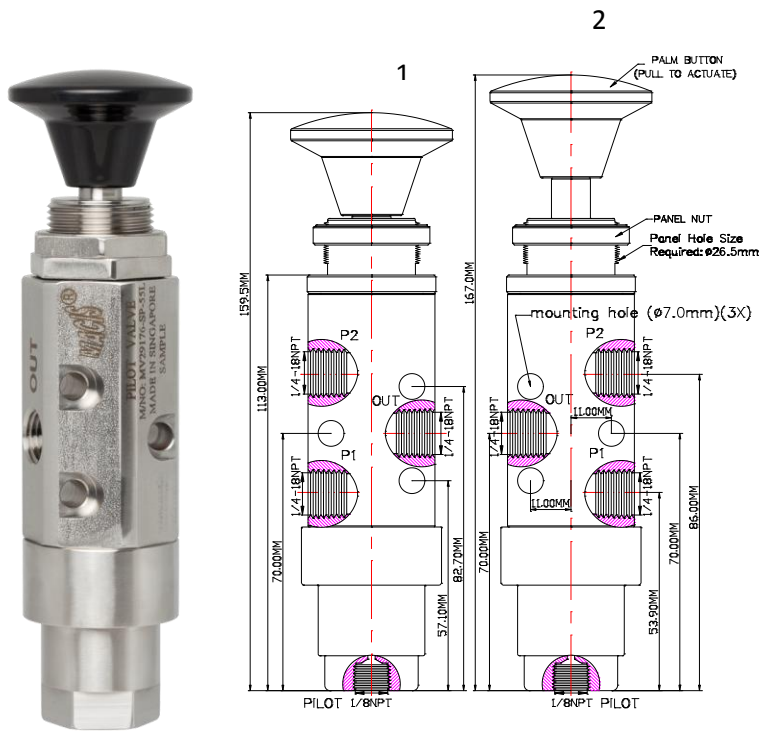
## Valve Operation

MV29176-SP-55L, MV29176-SP-55L-D & MV29178-SP-55L-D are 3 Way 2-Position, Universal operation, Manual palm button, Air latch pilot with spring return pilot valves, manual reset type.

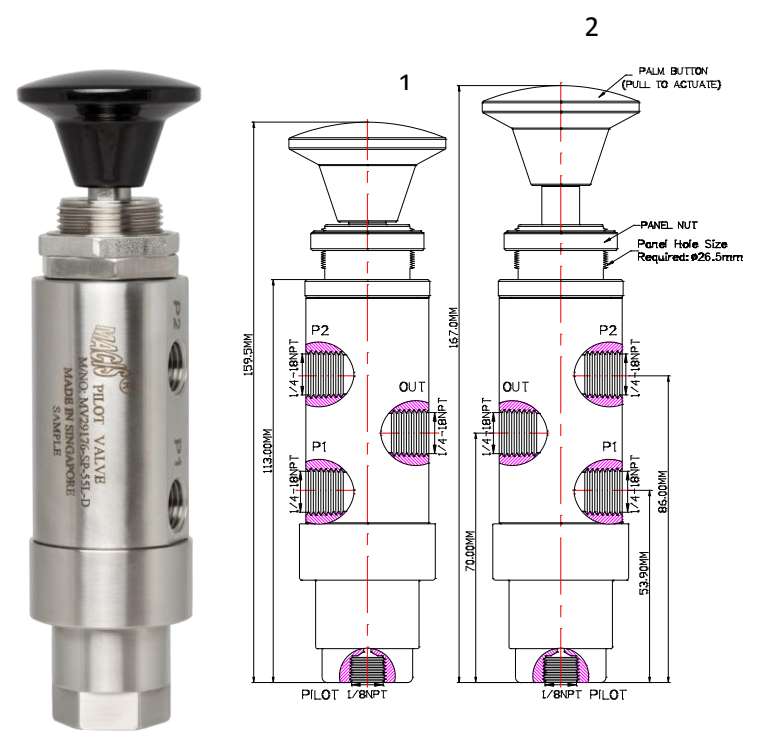
To open the valve, supply the Pilot signal pressure (within the required minimum pilot pressure range) to the Pilot port and manually pull the palm button to actuate, the valve function as per below control table (state1), the P2 port will open to OUT port and P1 port will be block. Once Pulling palm button outward and applied pilot signal pressure, the valve's normal in-service placement will be maintained.

To close the valve, manually push in palm button even when there is pilot signal pressure within the min pilot pressure range, the valve will return to close as per below control table (state 2), the P1port will open to OUT port and P2 port will be block. Reintroduction of the pilot signal pressure will not open the valve unless the palm button is manually pulled.

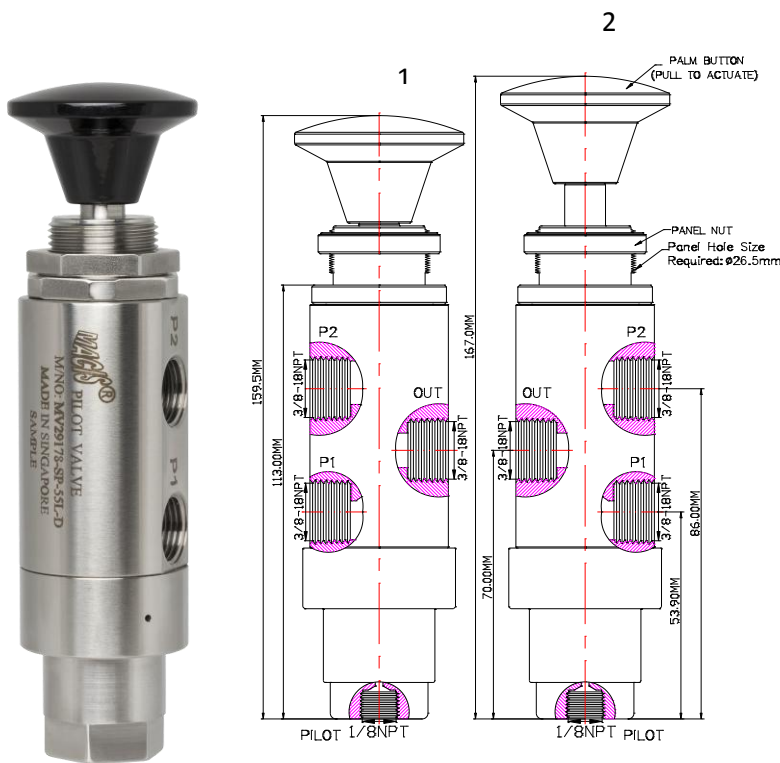
\*Note: 1.The valve is a universal operation, when select P2 port as IN port, the valve is normally closed. When select P1 port as IN port the valve is normally open.  
2. When the pilot port pressure signal drop to lower than 16psi (1.1bar), the valve will spring return to close position.



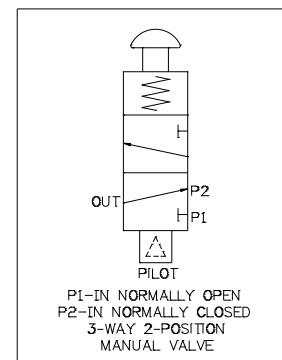
Ordering Ref : MV 29176-SP-55L



Ordering Ref : MV 29176-SP-55L-D



Ordering Ref : MV 29178-SP-55L-D



Flow Control Table (Palm Button)

STATE	P1	P2	OUT	PILOT	Palm Button
1	-	O	O	O	PULL
2	O	-	O	-	PUSH

## Specification

Control Application	3-Way 2-Position, Universal Operation, Manual Palm Button, Air Latch Pilot with Spring Return, Manually Reset Type	Distinctions	
Working Media	Air	<b>Ordering Ref no</b>	<b>Port Connection Size</b>
Pilot Pressure Range	28- 150 PSI (2.0 – 10.3bar)	MV 29176-SP-55L :	<b>Exterior Shape</b>
Max Working Pressure	300psi (20.6bar)	} P1 , P2 & OUT Ports : 1/4" NPT F Pilot Port : 1/8" NPT F	Hexagon A/ F 34.9mm (1 3/8")
Temperature Range	- 30°C to 120°C <i>Other Temperature Ranges available. Consult Factory</i>		MV 29176-SP-55L-D :
Material(Valve Body)	316 L	MV 29178-SP-55L-D:	P1 , P2 & OUT Ports : 3/8" NPT F Pilot Port : 1/8" NPT F
Net Weight	900gm		<b>Mounting Hole</b>
Panel Hole Size	Ø 26.5mm (1 3/64")		Without
Seal Material	Viton(FKM) <i>Other Seal Material Available Upon Request</i>		Without
Material(Palm Button)	Polyamide <i>Other Material Available Upon Request</i>		
Flow Rate	Cv = 1.65		

\*\* Measurement stated are with tolerance of +/-10%. Optional Parts/Material are available upon request.

MACIS PTE LTD

Blk 3015A Ubi Road 1, #01-02 & #01-06 Kampong Ubi Industrial Estate, Singapore 408705  
Email : [sales@macis.com.sg](mailto:sales@macis.com.sg) TEL : 65-6749 6011 / 65- 6749 7882 FAX : 65-6749 1398