

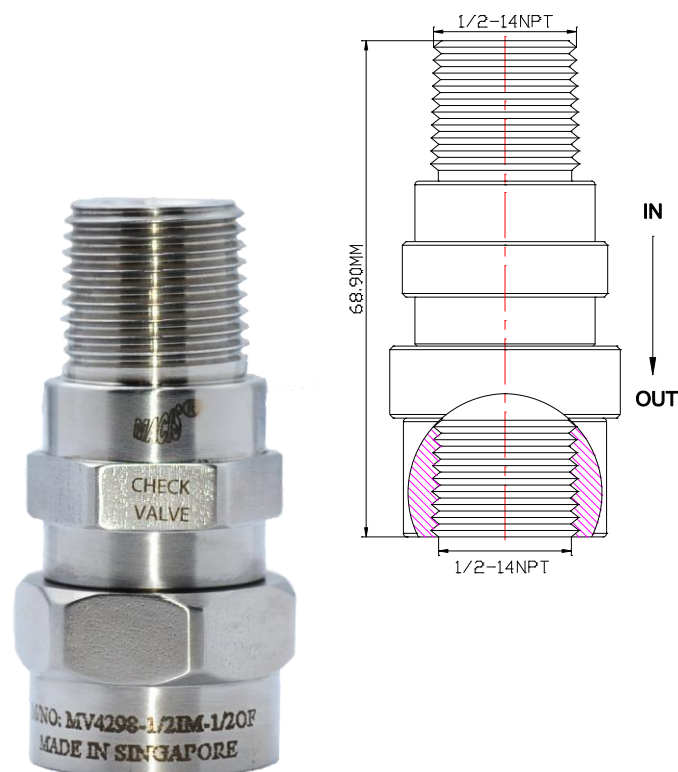
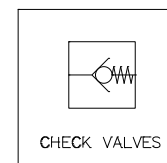


www.macis.com.sg

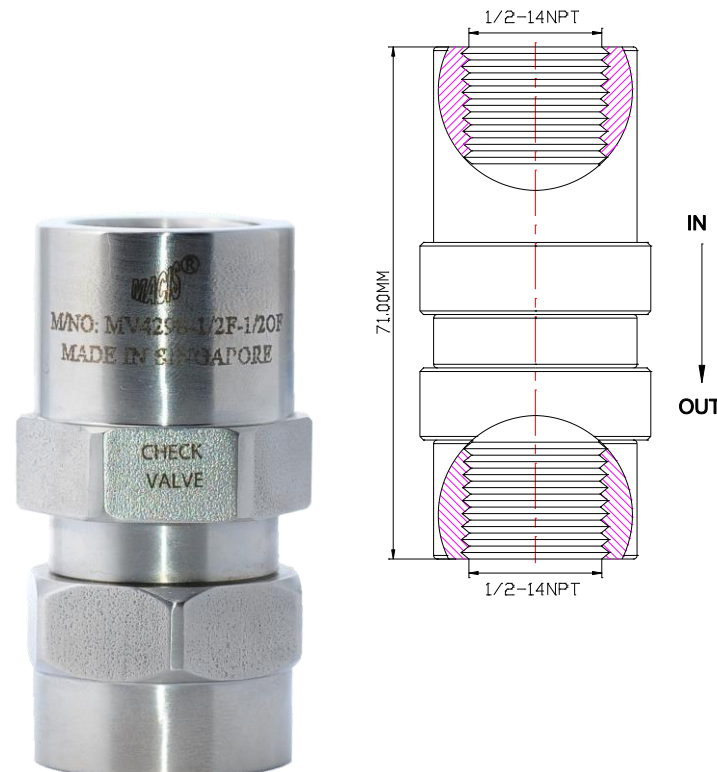
# CHECK VALVE

## Descriptions

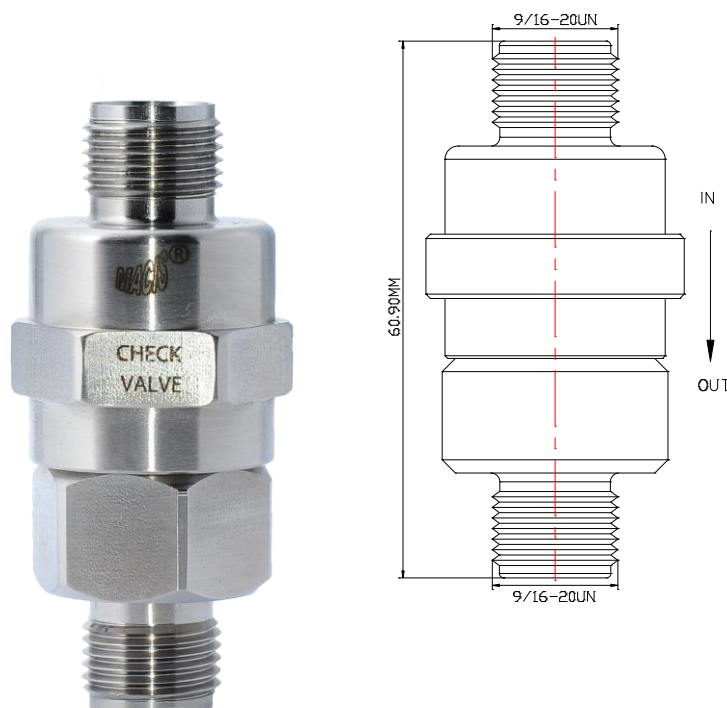
Check valve allows **gas fluid** to flow through it in only one direction (inlet to outlet), and by spring assisted poppet positioning to closing in response to backflow or insufficient forward pressure.



Ordering Ref : MV 4298L-1/2IM-1/2OF



Ordering Ref : MV 4298L-1/2IF-1/2OF



Ordering Ref : MV 4298333-L (Without Ferrule & Nuts)

MV 4298333L-OD3/8 (With Ferrule & Nuts)

## Specification

Control Application	Directional Flow( In the open position to allow forward flow and closed position to block reverse flow)	<b>Distinctions</b>  <table border="1"> <thead> <tr> <th>Ordering Ref No</th> <th>Port Connection Size</th> <th>Net Weight</th> </tr> </thead> <tbody> <tr> <td>MV 4298L-1/2IM-1/2OF :</td> <td>IN Port 1/2"-14NPT M, OUT Port 1/2"-14NPT F</td> <td>180gm</td> </tr> <tr> <td>MV 4298L-1/2 IF -1/2OF :</td> <td>IN &amp; OUT Ports 1/2"-14NPT F</td> <td>200gm</td> </tr> <tr> <td>MV 4298333-L :</td> <td>IN &amp; OUT Ports 9/16"-20UN M</td> <td>120gm</td> </tr> </tbody> </table>	Ordering Ref No	Port Connection Size	Net Weight	MV 4298L-1/2IM-1/2OF :	IN Port 1/2"-14NPT M, OUT Port 1/2"-14NPT F	180gm	MV 4298L-1/2 IF -1/2OF :	IN & OUT Ports 1/2"-14NPT F	200gm	MV 4298333-L :	IN & OUT Ports 9/16"-20UN M	120gm
Ordering Ref No	Port Connection Size		Net Weight											
MV 4298L-1/2IM-1/2OF :	IN Port 1/2"-14NPT M, OUT Port 1/2"-14NPT F		180gm											
MV 4298L-1/2 IF -1/2OF :	IN & OUT Ports 1/2"-14NPT F		200gm											
MV 4298333-L :	IN & OUT Ports 9/16"-20UN M		120gm											
Working Media	Air													
Max Working Pressure	10,000psi(689.4 bar)													
Cracking Pressure	1 to 3 PSI (0.068 to 0.206 bar) <i>Other Cracking Pressure are Available Upon Request</i>													
Temperature Range	- 30°C to 120°C <i>Other Temperature Ranges available. Consult Factory</i>													
Material(Valve Body)	316 L													
Orifice Size	Ø5.0mm ( <sup>13</sup> / <sub>64</sub> ")													
Seal Material	Viton(FKM) <i>Other Seal Material are Available Upon Request</i>													
Flow Rate	Cv = 1.4													

\*\*Measurement stated are with tolerance of +/-10%. Optional Parts/Material are available upon request.

## MACIS PTE LTD

Blk 3015A Ubi Road 1, #01-02 & #01-06 Kampong Ubi Industrial Estate, Singapore 408705  
 Email : [sales@macis.com.sg](mailto:sales@macis.com.sg) TEL : 65-6749 6011 / 65-6749 7882 FAX : 65-6749 1398