



www.macis.com.sg

PILOT VALVE (Manual Reset Type)

Valve Operation

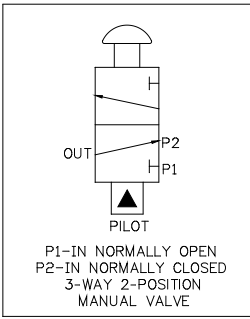
MV29176-NS-SP-55H-D-A & MV29178-NS-SP-55H-D-A are 3 Way 2-Position, Universal operation, Manual push-pull palm button, without spring return and air pilot operated pilot valves.

To open the valve, apply pilot signal pressure (within the required minimum pilot pressure range) at the Pilot Port for it to operate. Pilot signal pressure forces or manually pull the palm button out to actuate as per below Control table (State 1), the P2 port will open to OUT port and the P1 port will be block.

With no or lower than 5psi pilot signal pressure at the pilot port, the valve required to be manually push in on the palm button to close valve as per below Status table (State 2). The P2 port will be block, and the P1 port will open to OUT port.

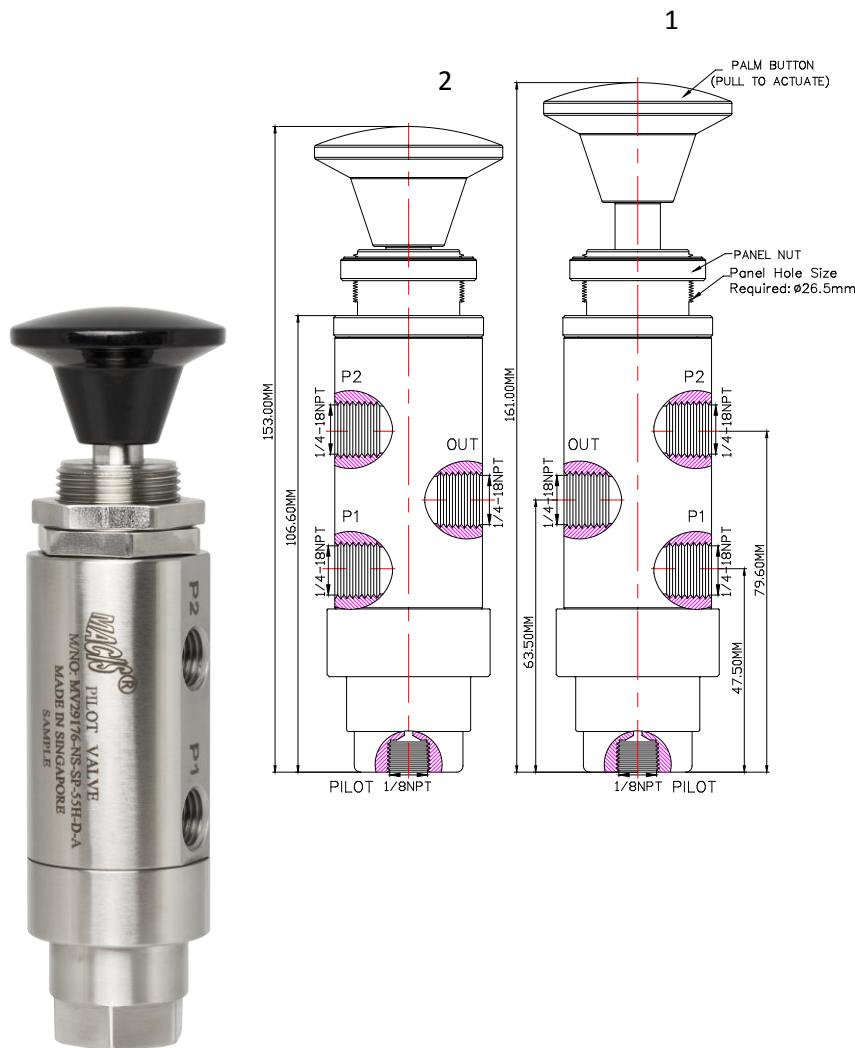
*Note: 1. The palm button cannot push to close the valve when the Pilot port pressure signal over than 5psi (0.344bar)

2 Valve is a universal operation, when select P2 port as IN port, the valve is normally closed. When select P1 port as IN port the valve is normally open.

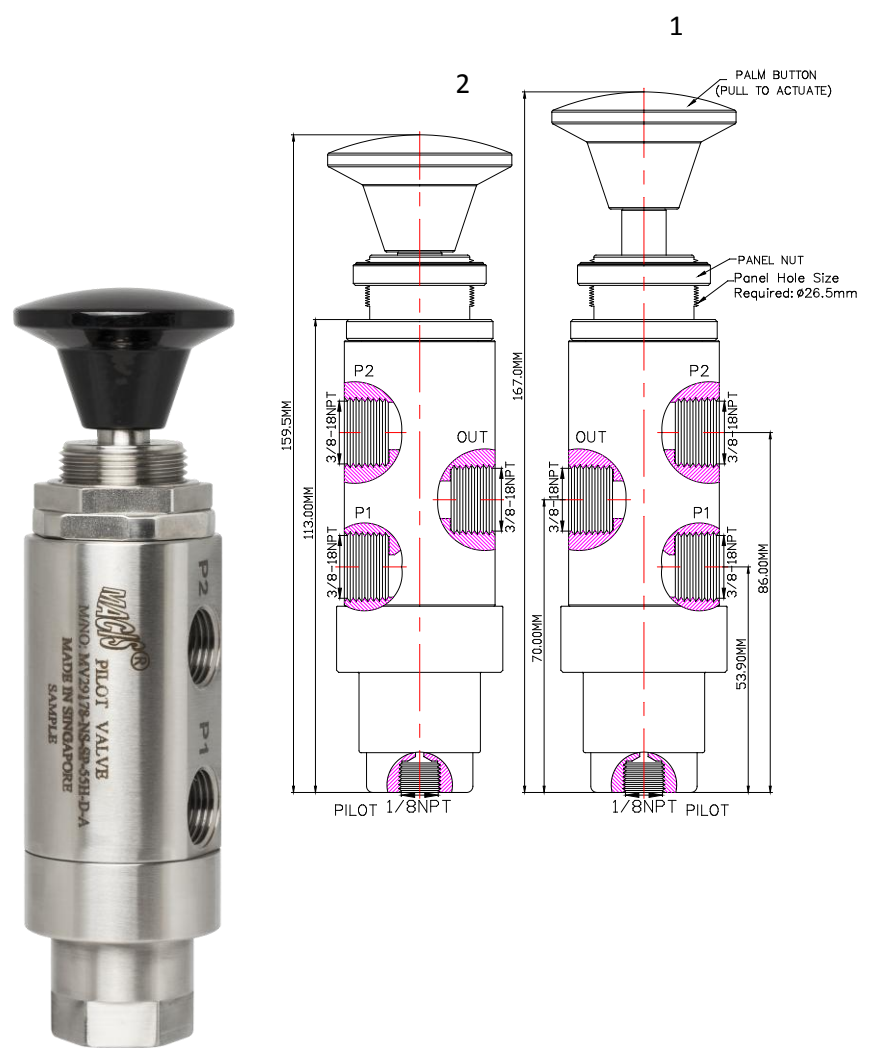


Flow Control Table (Palm Button)

STATE	P1	P2	OUT	PILOT	Palm Button
1	-	O	O	O	PULL
2	O	-	O	-	PUSH



Ordering Ref : MV29176-NS-SP-55H-D-A



Ordering Ref : MV29178-NS-SP-55H-D-A

Specification

Control Application	3-Way 2-Position, Universal Operation, Manual Push-Pull Palm Button, without Spring Return and Air Pilot operated
Net Weight	900 gm
Panel Hole Size	Ø 26.5mm (1 3/64")
Working Media	Oil
Pilot Pressure Range	10- 200 PSI (0.7 -13.7bar)
Max Working Pressure	200 PSI (13.7bar)
Temperature Range	- 30°C to 120°C <i>Other Temperature Ranges available. Consult Factory</i>
Material(Valve Body)	316 L
Seal Material	Nitrile Rubber (NBR) <i>Other Seal Material Available Upon Request</i>
Material(Palm Button)	Polyamide <i>Other Material Available Upon Request</i>
Flow Rate	Cv = 1.65

Distinctions

Ordering Ref No	Port Connection Size	Exterior Shape
MV29176-NS-SP-55H-D-A	P1 ,P2 & OUT Ports : 1/4"NPT F Pilot Port : 1/8" NPT F	Circular Ø 38.1 mm (1 1/2")
MV29178-NS-SP-55H-D-A	P1 , P2 & OUT Ports : 3/8"NPT F Pilot Port : 1/8NPT F	Circular Ø 40.0mm (1 37/64")

** Measurement stated are with tolerance of +/-10%. Optional Parts/Material are available upon request.

MACIS PTE LTD

Blk 3015A Ubi Road 1, #01-02 & #01-06 Kampong Ubi Industrial Estate, Singapore 408705
Email : sales@macis.com.sg Tel : 65-67490 6011 / 65-6749 7882 FAX : 65-6749 1398