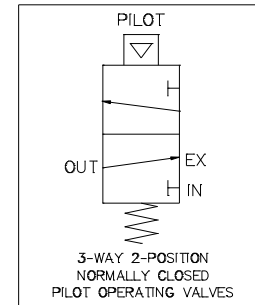
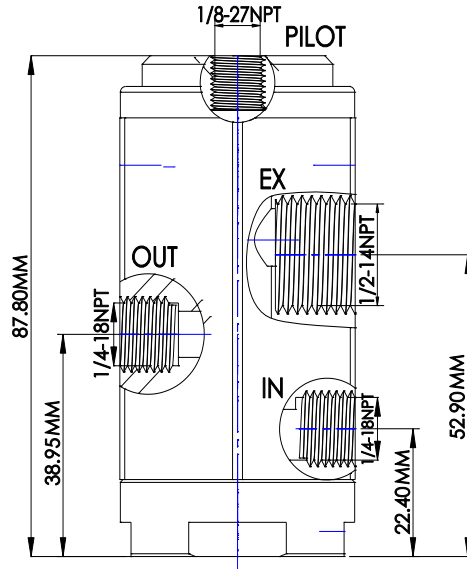




www.macis.com.sg

# PILOT VALVE

Valve Code: MV29171-52L-C



Flow Control Status Table

STATE	IN	OUT	EX	PILOT
1	-	O	O	-
2	O	O	-	O

Ordering Ref : MV29171-52L-C

## Specification

Control Application	3-Way 2-Position Normally Closed Auto Reset Type (Pilot Operated Spring Return)	<p><b>Valve Operation</b></p> <p><i>MV29171-52L-C is a 3-way 2-position Normally Closed Auto Reset Pilot valve. Pressure signal applied to Pilot Port to operate the valve.</i></p> <p><i>The pressure signal to Pilot port within the required minimum pilot pressure range, the valve will actuate to open the supply pressure from IN port to OUT port and block the EX port, as per above Status table (State 2).</i></p> <p><i>When pilot port pressure signal lower than the minimum pilot pressure range required, the valve will spring return to close as per above Status table (State 1). Supply pressure at IN port will be block, and the valve will vent the system pressure from OUT port to EX port.</i></p>
Port Connection Size	<b>IN &amp; OUT</b> Ports: 1/4"-18 NPT F <b>EX</b> Port: 1/2"-14 NPT F <b>Pilot</b> Port: 1/8"-27 NPT F	
Exterior Shape	Hexagon A/F44.4 mm (1 3/4")	
Net Weight	1.20kg	
Working Media	Air	
Pilot Pressure Range	30 - 120 PSI (2.0 - 8.2 bar)	
Max Working Pressure	200 PSI (13.7 bar)	
Temperature Range	- 30°C to 120°C <i>Other Temperature Ranges available. Consult Factory</i>	
Material(Valve Body)	316 L	
Seal Material (Standard)	Viton(FKM) <i>Other Seal Material Are Available Upon Request</i>	
Flow Rate	Out TO Exhaust: Ø 8.0mm	

\*\* Measurement stated are with tolerance of +/-10%. Optional Parts/Material are available upon request.

MACIS PTE LTD

Blk 3015A Ubi Road 1, #01-02 & #01-06 Kampong Ubi Industrial Estate, Singapore 408705

Email : sales@macis.com.sg