

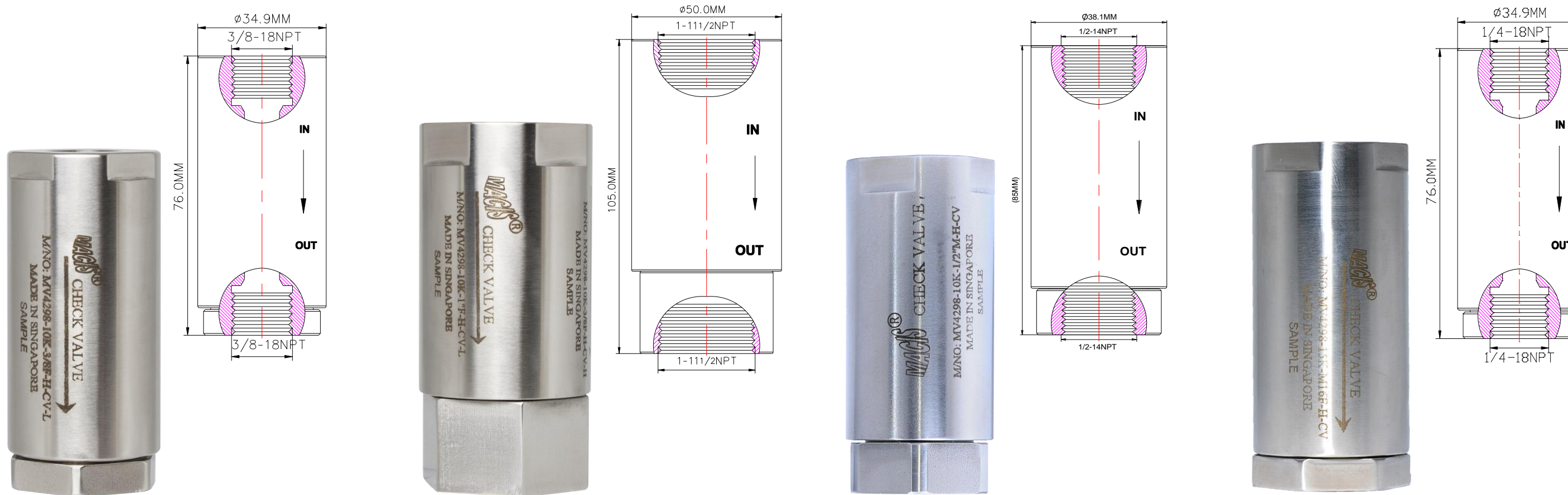
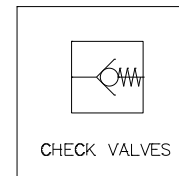


www.macis.com.sg

CHECK VALVE

Descriptions

Check valve is allows gas fluid to flow through it in only one direction (inlet to outlet), and by spring assisted poppet positioning to closing in response to backflow or insufficient forward pressure.



Ordering Ref : MV 4298L-10K-3/8F-H-CV

Ordering Ref : MV 4298L-15K-1\"/>

Ordering Ref : MV 4298L-15K-1/2F-H-CV

Ordering Ref : MV 4298L-10K-1/4F-H-CV

Specification

Control Application	Directional Flow(In the open position to allow forward flow and closed position to block reverse flow)	<h3>Distinctions</h3> <table border="1"> <thead> <tr> <th>Ordering Ref No</th> <th>Port Connection Size</th> <th>Net Weight</th> <th>Max Working Pressure</th> <th>Exterior Shape</th> </tr> </thead> <tbody> <tr> <td>MV 4298L-10K-3/8F-H-CV :</td> <td>IN & OUT Ports 3/8\"-18NPT F</td> <td>460gm</td> <td>10,000psi (689.4bar)</td> <td>Circular Ø34.9mm(1 3/8 \")</td> </tr> <tr> <td>MV 4298L-15K-1\"/> </td></tr></tbody> </table>	Ordering Ref No	Port Connection Size	Net Weight	Max Working Pressure	Exterior Shape	MV 4298L-10K-3/8F-H-CV :	IN & OUT Ports 3/8\"-18NPT F	460gm	10,000psi (689.4bar)	Circular Ø34.9mm(1 3/8 \")	MV 4298L-15K-1\"/>
Ordering Ref No	Port Connection Size		Net Weight	Max Working Pressure	Exterior Shape								
MV 4298L-10K-3/8F-H-CV :	IN & OUT Ports 3/8\"-18NPT F		460gm	10,000psi (689.4bar)	Circular Ø34.9mm(1 3/8 \")								
MV 4298L-15K-1\"/>													
Working Media	Air												
Cracking Pressure	1 to 3 PSI (0.068 to 0.206 bar) <i>Other Cracking Pressure are Available Upon Request</i>												
Temperature Range	- 30°C to 120°C <i>Other Temperature Ranges available. Consult Factory</i>												
Material(Valve Body)	316 L												
Orifice Size	Ø9.5mm (3/8 \")												
Seal Material	Viton(FKM) <i>Other Seal Material are Available Upon Request</i>												
Flow Rate	Cv = 5.8												

**Measurement stated are with tolerance of +/-10%. Optional Parts/Material are available upon request.

MACIS PTE LTD

Blk 3015A Ubi Road 1, #01-02 & #01-06 Kampong Ubi Industrial Estate, Singapore 408705
 Email : sales@macis.com.sg TEL : 65-6749 6011 / 65-6749 7882 FAX : 65-6749 1398