



www.macis.com.sg

PILOT VALVE (Auto Reset Type)

Valve Operation

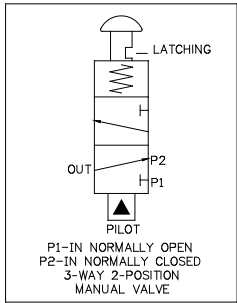
MV29176-SP-56H-D-A & MV29178-SP-56H-D-A are 3 Way 2-Position, Universal operation, Manual palm button & latch pin, air pilot with spring return, auto reset type pilot valves.

To open the valve, apply pilot signal pressure (within the required minimum pilot pressure range) at the Pilot Port for it to operate. Pilot signal pressure forces the palm button out to actuate as per below Control table (State 1), the P2 port will open to OUT port and the P1 port will be block.

To close the valve, the pilot port pressure signal drop to lower than 20psi (1.37bar), the valve will spring to close as per below control table (state 2), the P1port will open to OUT port and P2 port will be block.

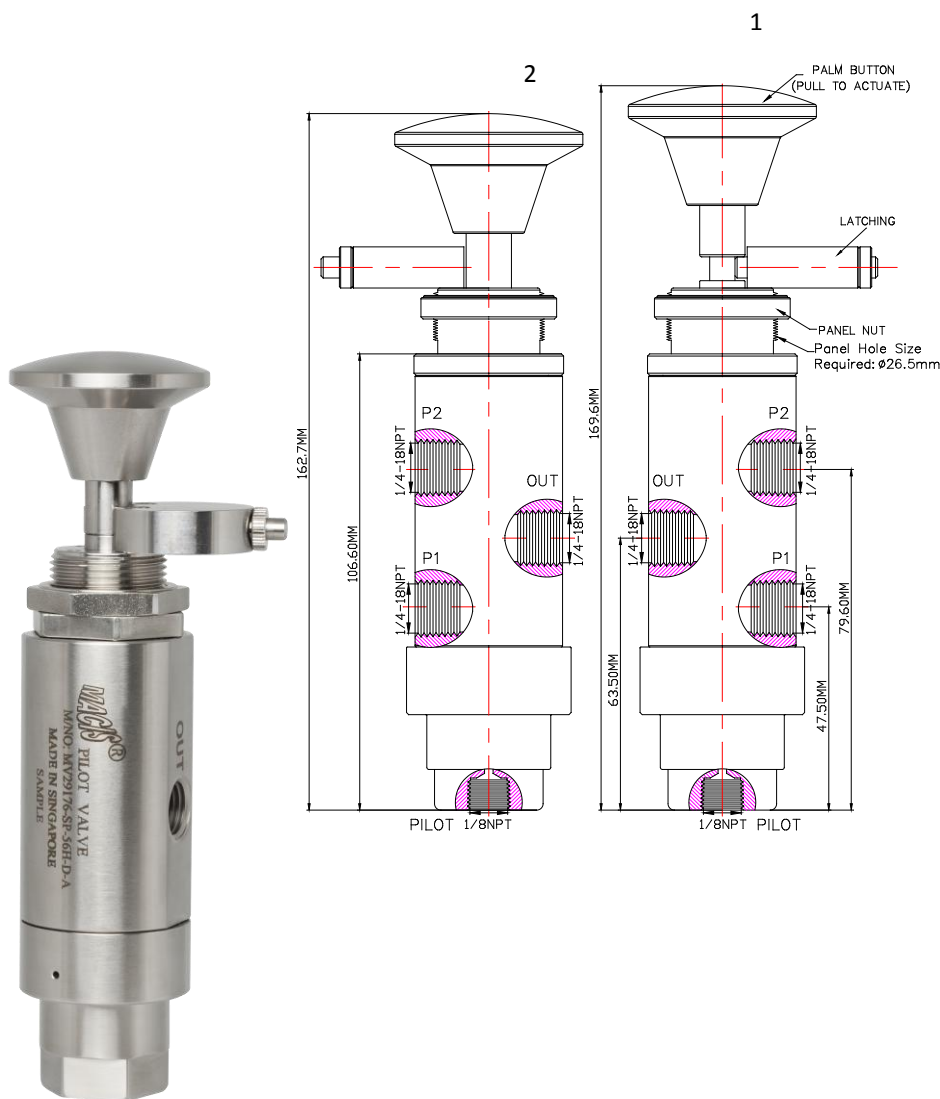
When there is no pilot signal or the pilot pressure lower than min operating pressure, engaging latching pin will keep the valve open, Latching pin disengage when pilot pressure is present as control table (State 1).

**Note: Valve is a universal operation, when select P2 port as IN port, the valve is normally closed. When select P1 port as IN port the valve is normally open.*

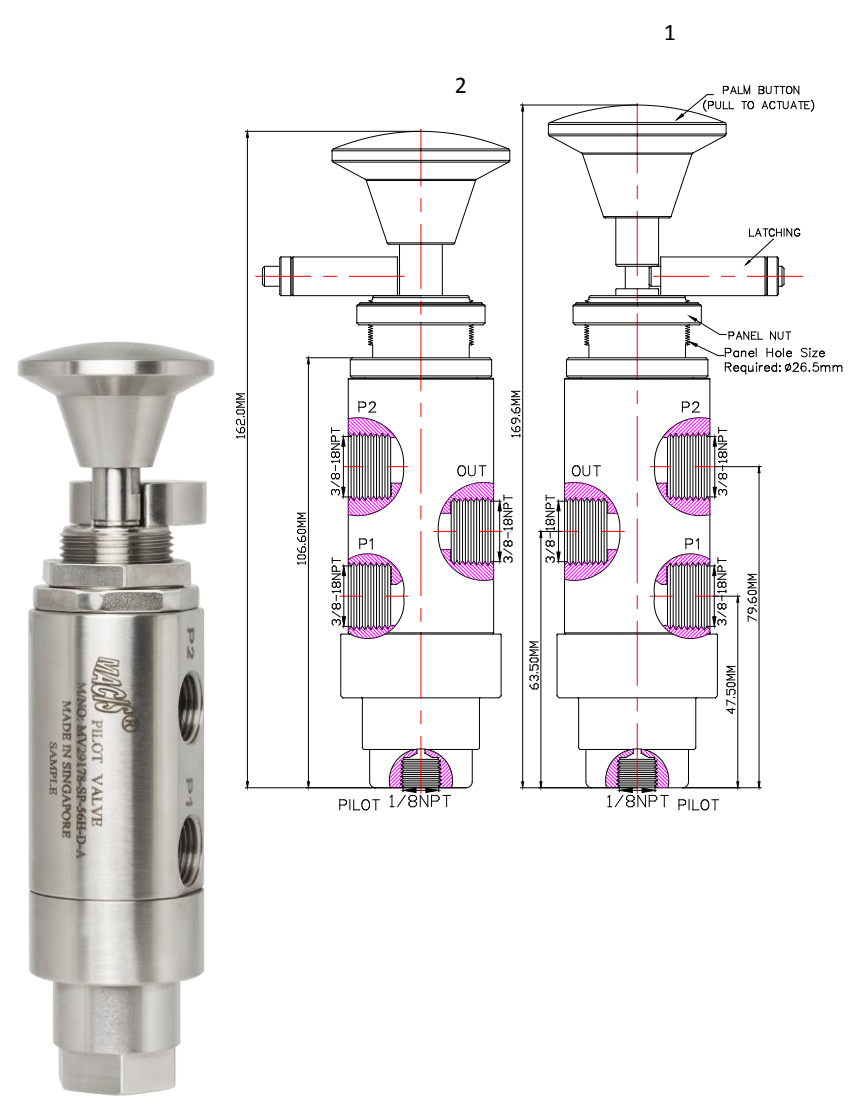


Flow Control Table

STATE	P1	P2	OUT	PILOT
1	-	O	O	O
2	O	-	O	-



Ordering Ref : MV29176-SP-56H-D-A



Ordering Ref : MV29178-SP-56H-D-A

Specification

Control Application	3-Way 2-Position, Universal Operation Manual Palm Button, Manual Latch Pin, Air Pilot with Spring Return, Auto Reset Type	Distinctions
Net Weight	1.0kg	
Panel Hole Size	Ø 26.5mm (1 3/64")	Ordering Ref No
Working Media	Oil	Port Connection Size
Pilot Pressure Range	38 - 300 PSI (2.6 – 20.6bar)	Exterior Shape
Max Working Pressure	300psi (20.6bar)	MV29176-SP-56H-D-A : P1 ,P2 & OUT Ports : 1/4"NPT F Pilot Port : 1/8"NPT F
Temperature Range	- 30°C to 120°C <i>Other Temperature Ranges available. Consult Factory</i>	MV29178-SP-56H-D-A : P1 , P2 & OUT Ports : 3/8"NPT F Pilot Port : 1/8NPT F
Material(Valve Body)	316 L	
Seal Material	Nitrile Rubber(NBR) <i>Other Seal Material Available Upon Request</i>	
Material(Palm Button)	316L <i>Other Material Available Upon Request</i>	
Flow Rate	Cv = 1.65	

** Measurement stated are with tolerance of +/-10%. Optional Parts/Material are available upon request.

MACIS PTE LTD

Blk 3015A Ubi Road 1, #01-02 & #01-06 Kampong Ubi Industrial Estate, Singapore 408705
Email : sales@macis.com.sg Tel : 65-67490 6011 / 65-6749 7882 FAX : 65-6749 1398