



www.macis.com.sg

MANUAL OPERATED VALVE

Valve Operation

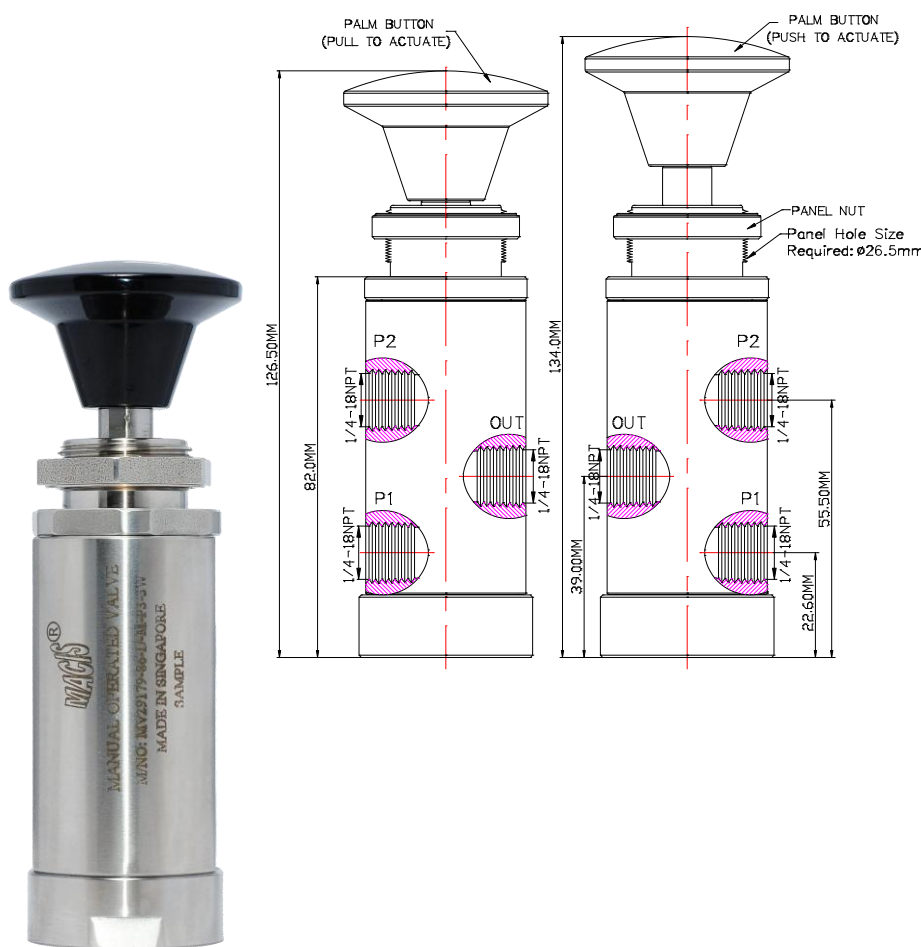
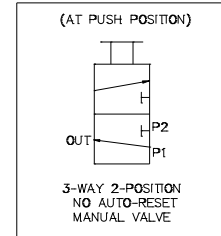
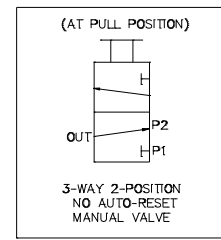
MV29179-NS-86H-PSL & MV29180-NS-86H-PSL are 3 Way 2-Position, Universal operation, Manual push / pull to actuate, No auto-reset function manual operated valves, manually type. At normal position (the palm button is at push position), the valve function as per status table (state 1), the P1 port is open to OUT port and the P2 port is block. But when select P1 port as IN port, the valve function as normally open position, and when select P2 port as IN port, the valve function as normally close position.

To actuate by manually pull the palm button, the valve function as per status table (state 2), the P2 port will open to OUT port and P1 port will be block. But when select P1 port as IN port, the valve function as normally close position, and when select P2 port as IN port, the valve function as normally open position.

**Note: The valve is a non auto-reset function, it required to be manually push or pull the palm button to operate.*

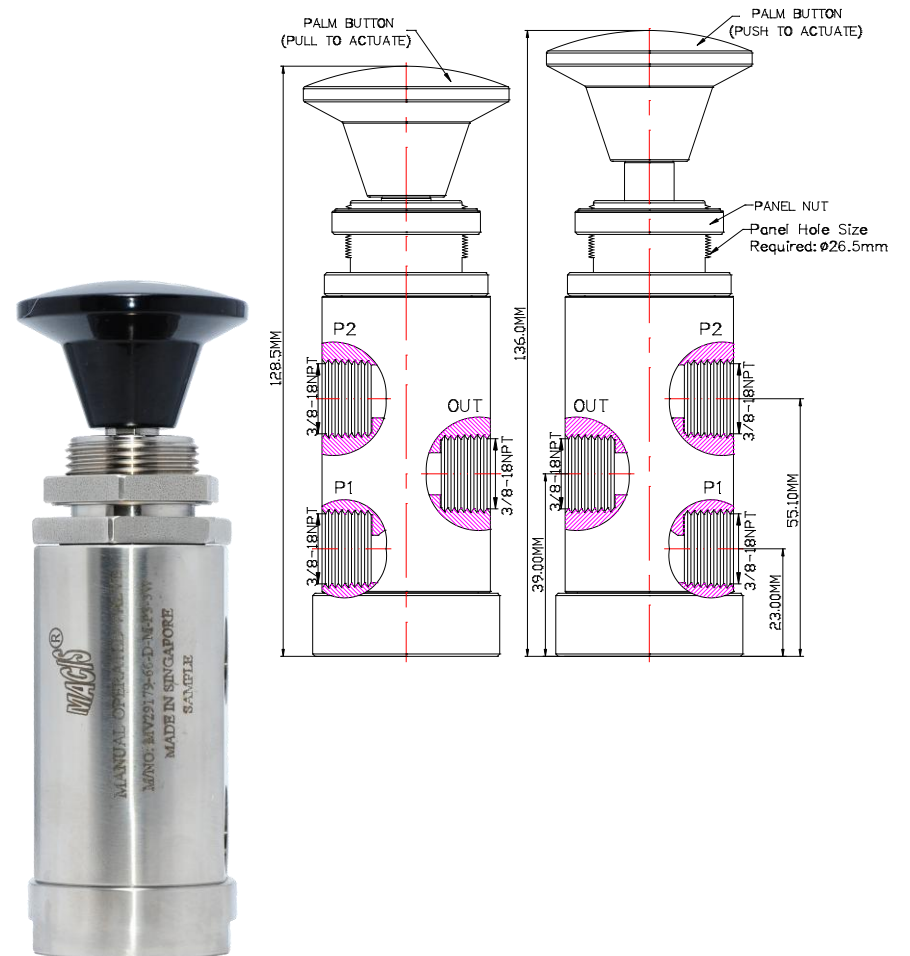
Flow Control Status Table

STATE	P1	OUT	P2	Palm Button
1	O	O	-	Push
2	-	O	O	Pull



Ordering Ref : MV29179-NS-86H-PSL

Corresponding to: MV2917986-D-M-P3-3W-R / MV2917986-D-M-P3-3W-B



Ordering Ref : MV29180-NS-86H-PSL

Corresponding to: MV2917966-D-M-P3-3W-R / MV2917966-D-M-P3-3W-B

Specification

Control Application	3-Way 2-Position, Universal Operation, Manual Push / Pull to Actuate No Auto-Reset Function Manually Type	Distinctions
Panel Hole Size	Ø 26.5mm (1 3/64")	
Working Media	Oil	Ordering Ref No Port Connection Size Exterior Shape Net Weight
Max Working Pressure	300 PSI (20.6bar)	MV29179-NS-86H-PSL : 1/4"NPT F Circular Ø 38.1 mm (1 1/2") 700gm
Temperature Range	- 30°C to 120°C <i>Other Temperature Ranges available. Consult Factory</i>	MV29180-NS-86H-PSL: 3/8"NPT F Circular Ø 40.0 mm (1 37/64") 800gm
Material(Valve Body)	316L	
Seal Material	Nitrile Rubber(NBR) <i>Other Seal Material are Available Upon Request</i>	
Material (Palm Button)	Polyamide <i>Other Material are Available Upon Request</i>	
Color(Palm Button)	Black / Red <i>There are two Color for select, kindly state when ordering</i>	
Flow Rate	Cv = 1.6	

** Measurement stated are with tolerance of +/-10%. Optional Parts/Material are available upon request.

MACIS PTE LTD

Blk 3015A Ubi Road 1, #01-02 & #01-06 Kampong Ubi Industrial Estate, Singapore 408705
Email : sales@macis.com.sg TEL : 65-6749 6011 / 65-6749 7882 FAX : 65-6749 1398