



www.macis.com.sg

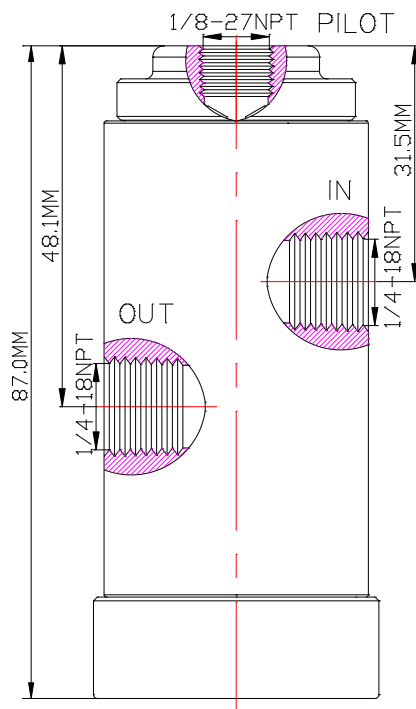
PILOT VALVE (EXCESS PRESSURE)

Valve Operation

The Model MRC-OPSO-006L is a 2-Way 2-Position excess pressure pilot valves, this type of valve is special design to provide an effective shut-off function when the pilot port pressure sign exceeds a pre-determined pressure setting point.

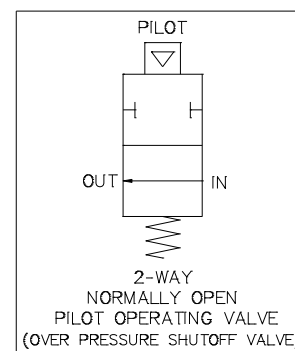
At normally (when pilot port pressure signal lower than pilot setting point) the valve function as per below status table (state 1), the IN port will open to OUT port..

When pressure signal to Pilot port exceeds a pre-determined pressure setting point, the valve will actuate to close as per below Status table (State 2). Supply pressure at IN port will be block.



Flow Control Status Table

STATE	IN	OUT	PILOT PRESSURE
1	o	o	Lower Than Setting Point
2	-	-	To Exceed Setting Point



Model NO: MRC-OPSO-006L

Specification

Control Application	2-Way 2-Position, Normally Open Auto Rest Type (with Shutoff Function When Pilot Pressure exceeds a pre-determined Pressure Setting)					
Port Connection Size	IN, OUT Ports: 1/4"-18 NPT F Pilot Port: 1/8"-27 NPT F					
Exterior Shape	Circular Ø 38.1 mm (1 1/2 ")					
Net Weight	700 gm					
Working Media	Air					
Max Working Pressure	200 PSI (13.7 bar)					
Temperature Range	- 30°C to 120°C <i>Other Temperature Ranges available. Consult Factory</i>					
Material(Valve Body)	316 L					
Seal Material(Standard)	Viton(FKM) <i>Other Seal Material are Available Upon Request</i>					
Flow Rate	Cv = 1.6					
Ordering Ref NO	MRC-OPSO-006L-050 / MRC-OPSO-006L-060 / MRC-OPSO-006L-070 / MRC-OPSO-006L-080 / MRC-OPSO-006L-090 / MRC-OPSO-006L-130					
Pilot Pressure Setting Point (Shutoff Pressure)	50psi(3.44bar)	60psi(4.13bar)	70psi(4.82bar)	80psi(5.51bar)	90psi(6.20bar)	130psi(8.96bar)

** Measurement stated are with tolerance of +/-10%. Optional Parts/Material are available upon request.

MACIS PTE LTD

Blk 3015A Ubi Road 1, #01-02 & #01-06 Kampong Ubi Industrial Estate, Singapore 408705
Email : sales@macis.com.sg TEL : 65-6749 6011 / 65-6749 7882 FAX : 65-6749 1398