



www.macis.com.sg

## ADJUSTABLE PILOT VALVE

### Valve Operation

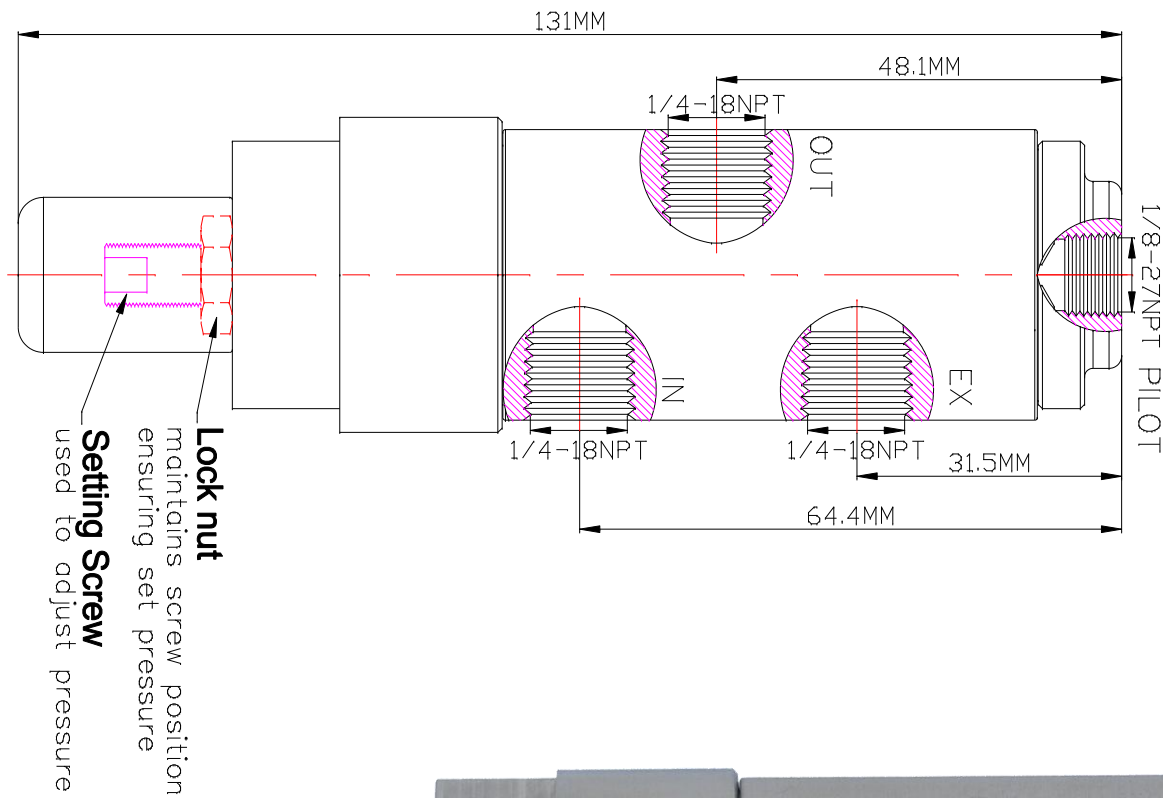
MV29171-54H-D-C-3W-PS is 3-way 2-position Normally Closed Adjustable Pilot Setting Auto Pilot Valve. Pressure signal applied to Pilot Port to operate the valve.

The pressure signal to Pilot port within the required minimum pilot pressure range, the valve will actuate to open supply pressure from IN port to OUT port and block at EX port, as below Status table (State 2).

When pilot port pressure signal lower than the minimum pilot pressure range required, the valve will spring return to close as per below Status table (State 1). Supply pressure at IN port will be block, and the valve will vent the system pressure from OUT port to EX port.

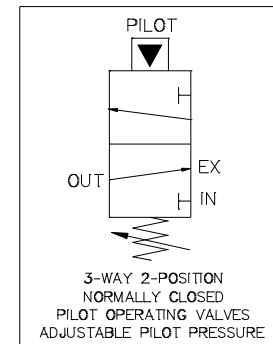
Setting screw is the additional function for adjusting the required pilot operation pressure rang.

*\*Note: Setting screw is the additional function for adjusting the required pilot operation pressure, the valve pilot setting range can be adjustable from 60-120psi (4.14 – 8.27 bar)*



Flow Control Status Table

STATE	IN	OUT	EX	PILOT
1	-	O	O	-
2	O	O	-	O



Ordering Ref : MV29171-54H-D-C-3W-PS

### Specification

Control Application	3-Way 2-Position, Normally Closed Adjustable Pilot Setting Type (Pilot Operated Spring Return)
Port Connection Size	IN, OUT & EX Ports: 1/4"-18 NPT F Pilot Port: 1/8"-27 NPT F
Exterior Shape	Circular Ø 38.1 mm (1 1/2 ")
Net Weight	800 gm
Working Media	Oil
Pilot Pressure(Setting) Range	60 - 120 PSI (4.14 – 8.27 bar)
Max Working Pressure	200 PSI (13.7 bar)
Temperature Range	- 30°C to 120°C <i>Other Temperature Ranges available. Consult Factory</i>
Material(Valve Body)	316 L
Seal Material(Standard)	Nitrile Rubber(NBR) <i>Other Seal Material are Available Upon Request</i>
Flow Rate	Cv = 1.6

\*\* Measurement stated are with tolerance of +/-10%. Optional Parts/Material are available upon request.

MACIS PTE LTD

Blk 3015A Ubi Road 1, #01-02 & #01-06 Kampong Ubi Industrial Estate, Singapore 408705  
Email : [sales@macis.com.sg](mailto:sales@macis.com.sg) TEL : 65-6749 6011 / 65-6749 7882 FAX : 65-6749 1398