

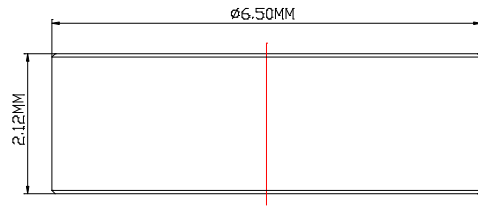


www.macis.com.sg

# FLOW NIPPLE

## Description

The MV6248110-H is a flow nipple, it placed in a pipe line to regulate the flow of oil from a well—called also flow bean.



Ordering Ref : MV6248110-H

## Specification

Net Weight	0.4 gm
Working Media	Oil
Max Working Pressure	10,000 PSI (689.4 bar)
Temperature Range	- 30°C to 120°C <i>Other Temperature Ranges available. Consult Factory</i>
Material(Valve Body)	SUS17-4 PH
Orifice Size	Ø0.50 mm (0.02") or Ø0.75 mm (0.03") <i>Kindly state orifice size when ordering</i>
Flow Rate	Cv = 0.01(with Ø0.50mm) , Cv = 0.02 (with Ø0.75mm)
Options	Body material and orifice size other option available upon request

\*\* Measurement stated are with tolerance of +/-10%. Optional Parts/Material are available upon request.

### MACIS PTE LTD

Blk 3015A Ubi Road 1, #01-02 & #01-06 Kampong Ubi Industrial Estate, Singapore 408705  
Email : [sales@macis.com.sg](mailto:sales@macis.com.sg) Tel : 65-6749 6011 / 65-6749 7882 Fax : 65-6749 1398