

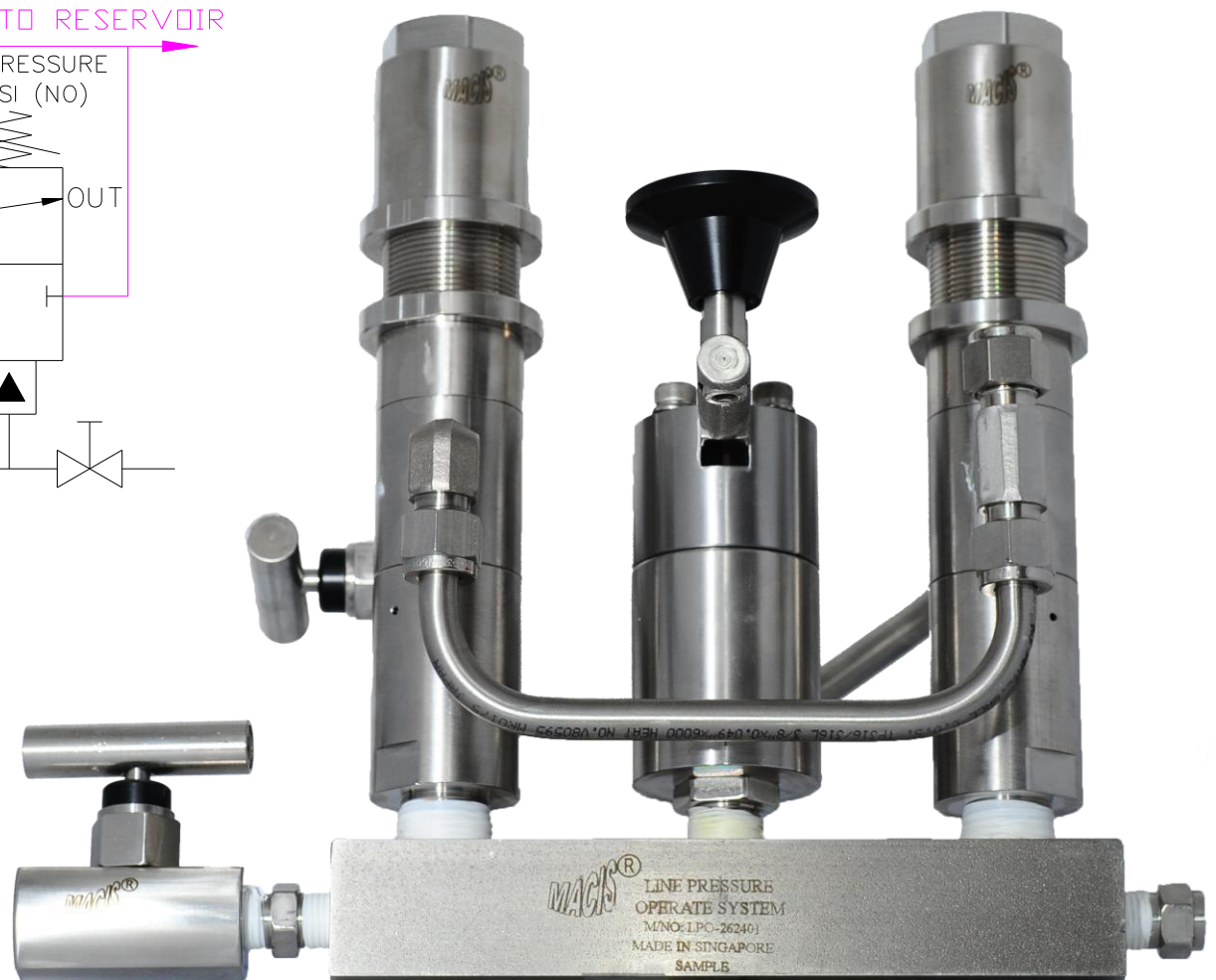
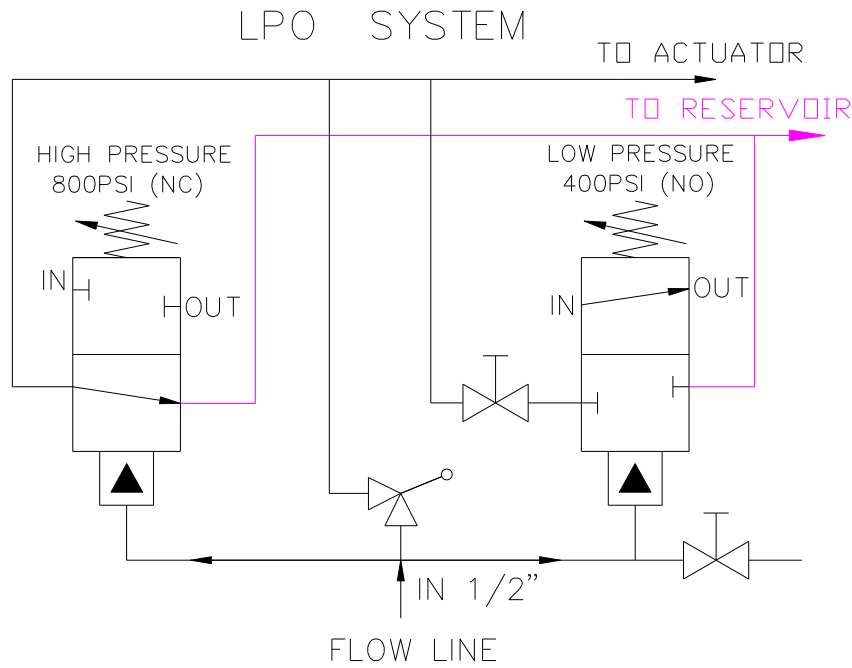


www.macis.com.sg

LINE PRESSURE OPERATED (LPO) SYSTEM

OPERATION FUNCTION

The operating principle of the LPO System is based on the permitted the line pressure to the pressure sensor and actuator through the Velocity Check which also is the master control valve for blocking the line pressure supply in response to action by either the High or Low Sensor.



Ordering Ref : LPO-MV262401-H [eg:Setting 800psi(HP)/400psi(LP)]

Specification

System Components <i>(We are available provide other equal type valve on request)</i>	High Pressure Sensor (NC) Low Pressure Sensor (NO) Manifold Pilot Base Velocity Check Valve (Manual) Isolate Valve (Start-up)	<p>OPERATION PROCESS</p> <p>Connect the actuator to the Velocity Check Valve outlet/ sensor inlet loop, open the actuator, and close the isolate valve on the low-pressure sensor inlet port.</p> <p>Push the Velocity Check Valve handle, when the actuator fully open and the pressure are stabilize in the system loop, release the handle.</p> <p>When the pressure in the normal operating range, open the isolate valve on the low-pressure sensor inlet port to put the system in the automatic operation model.</p>
Option Components	Needle valve (Calibration Port)	
Tubing Connection	3/8"OD x 0.065(Standard) 3/8"OD x 0.049 (Other Options available)	
Sensor Connection	Sensor Port:1/2"-14NPT M Control Port:1/4"-18NPT F	
Net Weight	6.0kg	
Working Media	Oil	
Flow Rate	Cv = 0.16	
Max Working Pressure	Sensing Port: 10,000PSI (689.655bar) Control Port: 6,000PSI (413.793bar)	
Temperature Range	- 30°C to 120°C <i>Other Temperature Ranges available. Consult Factory</i>	
Material(Valve Body)	316L	
Seal Material	Nitrile Rubber(NBR) <i>Other Seal Material are Available Upon Request</i>	

** Optional Parts/Material are available upon request.

MACIS PTE LTD

Blk 3015A Ubi Road 1, #01-02 & #01-06 Kampong Ubi Industrial Estate, Singapore 408705
Email : sales@macis.com.sg TEL : 65-6749 6011 / 65-6749 7882 FAX : 65-6749 1398